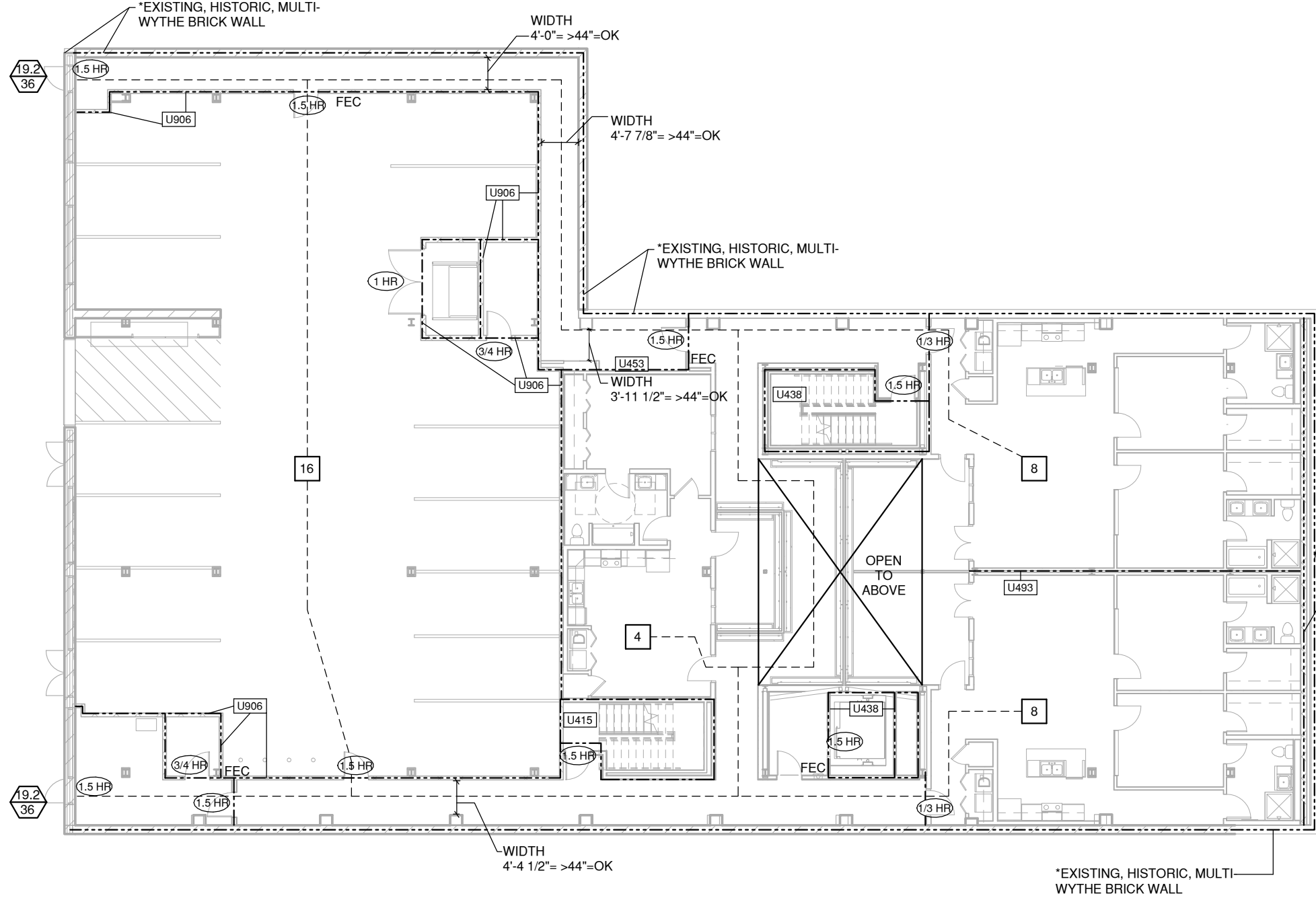


1 FIRST FLOOR PLAN

SCALE: 1/16" = 1'-0"



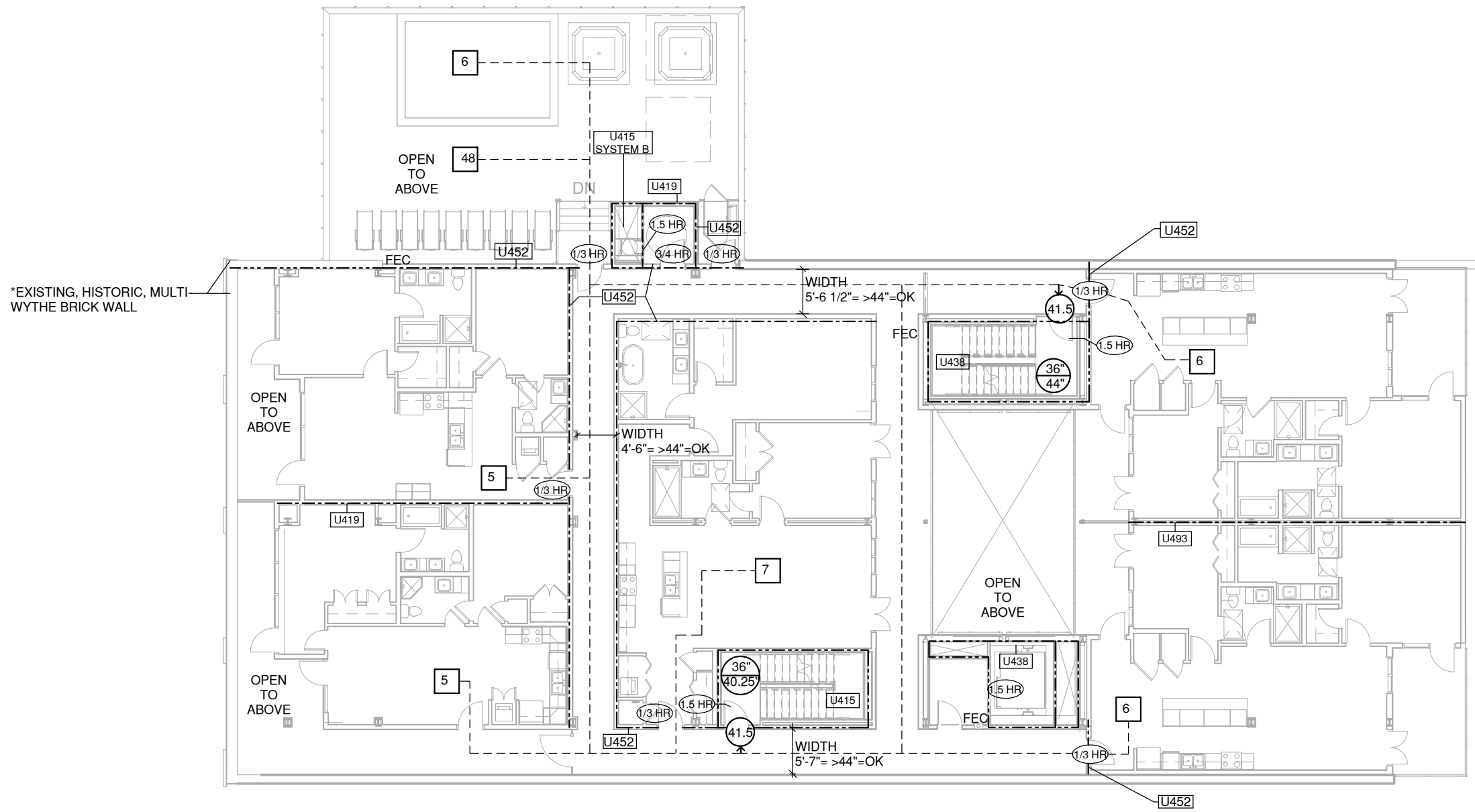
*HISTORIC WALL RESISTANCE RATING

IBC 722.2.1.2.1 TWO OR MORE WYTHES
THE FIRE RESISTANCE RATING FOR WALL PANELS CONSISTING OF TWO OR MORE WYTHES SHALL BE PERMITTED TO BE DETERMINED BY THE FORMULA:
R=R1+R2+R3
WHERE R= FIRE ENDURANCE OF THE ASSEMBLY, MINUTES
R1, R2, R3 = FIRE ENDURANCE OF INDIVIDUAL WYTHES, MINUTES
CALCULATED FIRE RESISTANCE RATINGS ARE TAKEN FROM TABLE 722.2.1.2 (2)

R=8.1+8.1+8.1
R=24.3
R=180 MINUTES

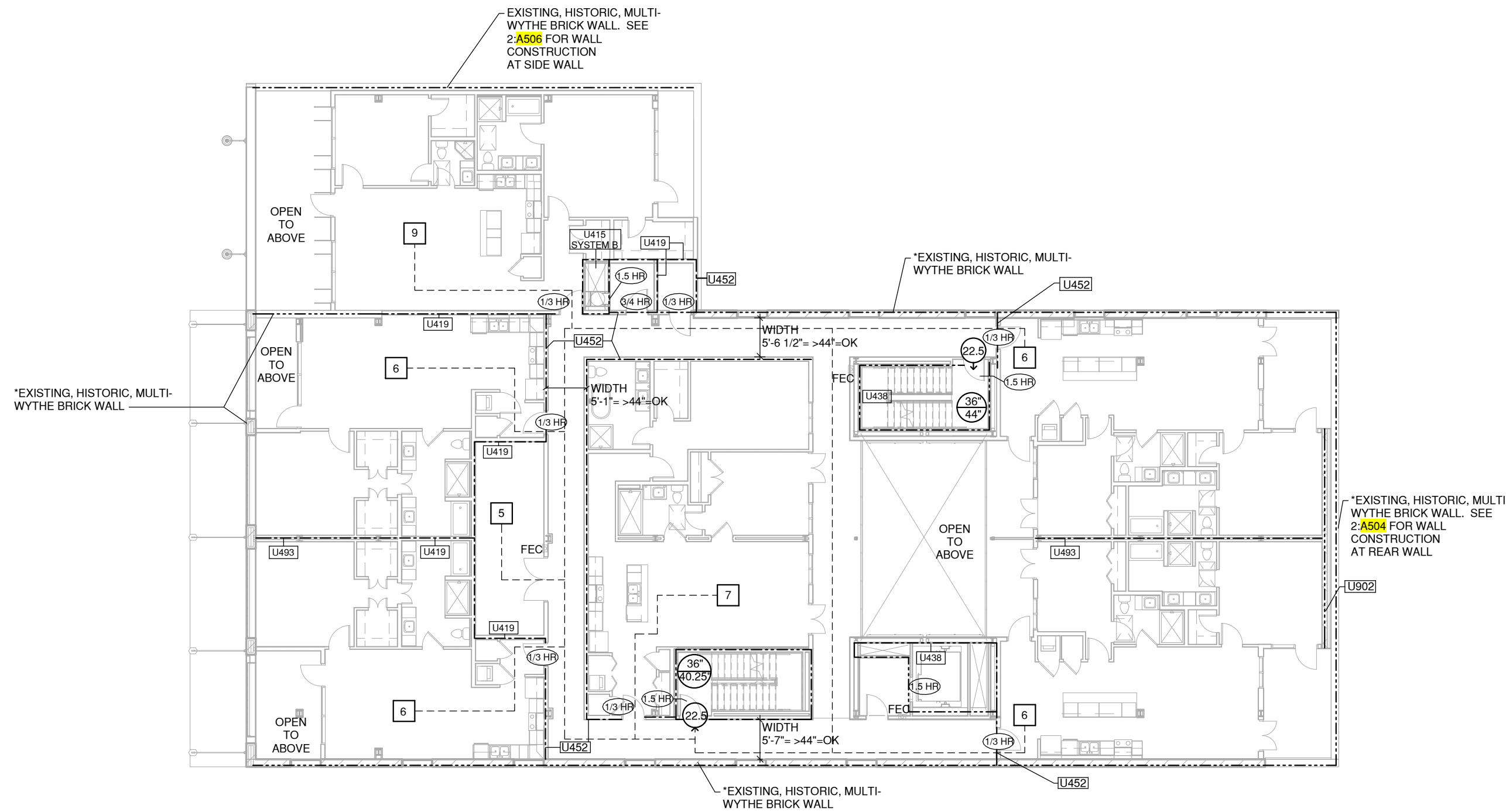
3 THIRD FLOOR PLAN

SCALE: 1/16" = 1'-0"



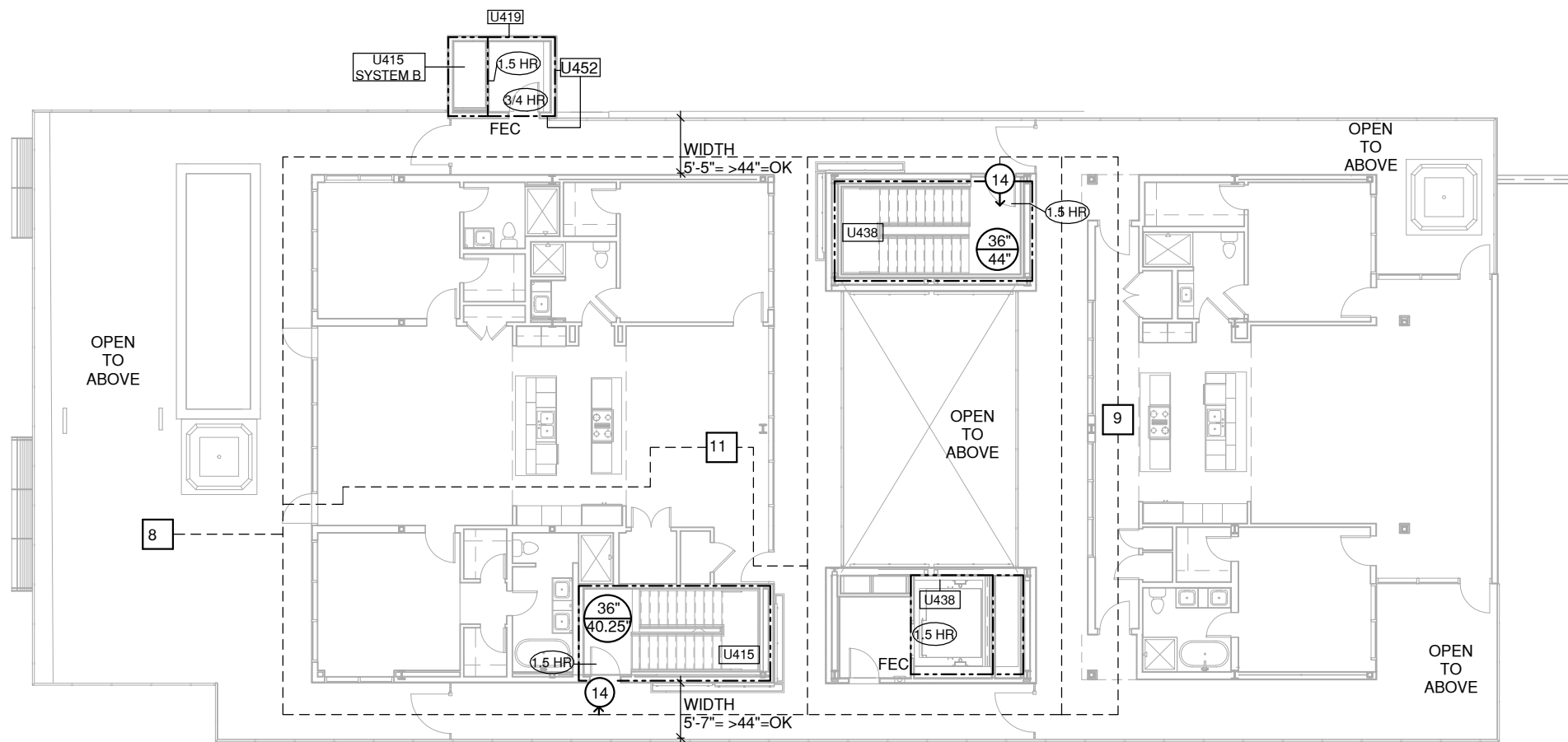
2 SECOND FLOOR PLAN

SCALE: 1/16" = 1'-0"



4 FOURTH FLOOR PLAN

SCALE: 1/16" = 1'-0"



EGRESS REQUIREMENTS

(WITH SPRINKLER SYSTEM)

COMMON PATH OF TRAVEL:

R-2 OCCUPANCY: 125'-0" (IBC TABLE 1014.3)
50'-0" (NFPA 101:30.2.5.3.2)
S-2 OCCUPANCY: 100'-0" (IBC TABLE 1014.3)
100'-0" (NFPA 101:TABLE 42.2.5)

MAXIMUM TRAVEL DISTANCE:

R-2 OCCUPANCY: 250'-0" (IBC TABLE 1016.2)
200'-0" (NFPA 101:30.2.5.3.2)
S-2 OCCUPANCY: 400'-0" (IBC TABLE 1016.2)
400'-0" (NFPA 101:TABLE 42.2.6)

DEAD END CORRIDORS:

R-2 OCCUPANCY: 50'-0" (IBC 1018.4)
50'-0" (NFPA 101:30.2.5.4.2)
S-2 OCCUPANCY: 50'-0" (IBC 1018.4)
100'-0" (NFPA 101:TABLE 42.2.5)

OCCUPANT SEPARATION

SHAFT ENCLOSURES IBC 713
CONNECT 4 STORIES OR MORE
TYPE OF DOOR ALLOWABLE 2 HOUR
1 1/2 HOUR

ELEVATOR LOBBY IBC 713.14.1
EXCEPTION 4: ENCLOSED ELEVATOR LOBBIES ARE NOT REQUIRED
WHERE THE BUILDING IS PROTECTED BY AN APPROVED AUTOMATIC
SPRINKLER SYSTEM

SEPERATION WALLS IBC420.2
WALLS SEPERATING DWELLING UNITS 1 HOUR (IBC 706.3)
CORRIDOR WALLS 1/2 HOUR (NFPA 30.3.7.2)
1/2 HOUR (IBC 1018.1)
1/2 HOUR (NFPA 30.3.7.1)

TRASH COLLECTION ROOMS NFPA 30.3.2.1.1
1 HOUR SEPARATION

TRASH CHUTE 2 HOUR SHAF SEPARATION IBC 713.4
1 HOUR SHAF SEPARATION NFPA 101:30.3.1.1.4

TRASH CHUTE ACCESS ROOMS IBC 713.13.1
1 HOUR SEPARATION, 3/4 HOUR DOORS

OCCUPANT LOAD

IBC TABLE 1004.1.2, NFAP 101 TABLE 7.3.1.2

FIRST FLOOR
RESIDENTIAL
AREA:4057
OCCUPANT LOAD: 20

STORAGE:
AREA:4885
OCCUPANT LOAD: 16

SECOND FLOOR
RESIDENTIAL
AREA:8231
OCCUPANT LOAD: 40

EXERCISE ROOM:
AREA:286
OCCUPANT LOAD: 5

THIRD FLOOR
RESIDENTIAL
AREA:5039
OCCUPANT LOAD: 29

SWIMMING POOL:
AREA:200
OCCUPANT LOAD: 6

POOL DECK:
AREA:1457
OCCUPANT LOAD: 48

FOURTH FLOOR
RESIDENTIAL
AREA:5772
OCCUPANT LOAD: 28

TOTAL OCCUPANT LOAD: 192

FIRE RESISTANCE REQUIREMENTS

FIRE RESISTANCE RATING REQUIREMENTS FOR BLDG. ELEMENTS

IBC TABLE 601 FOR TYPE IIB

STRUCTURAL FRAME: 0 HOUR
EXTERIOR BEARING WALLS: 0 HOUR
INTERIOR BEARING WALLS: 0 HOUR
INTERIOR NON BEARING WALLS: 0 HOUR
FLOOR CONSTRUCTION: 0 HOUR
ROOF CONSTRUCTION: 0 HOUR

FIRE-RESISTANCE RATING REQUIREMENTS FOR EXTERIOR WALLS BASED ON
SEPARATION DISTANCE
IBC TABLE 602 FOR GROUP R, S-2

FSD = LESS THAN 5' 1 HOUR
FSD = 5' OR MORE, LESS THAN 10' 1 HOUR
FSD = 10' OR MORE, LESS THAN 30' 0 HOUR
FSD = 30' OR MORE 0 HOUR

APPLICABLE CODES

2012 LIFE AND SAFETY CODE (NFPA 101)
2012 INTERNATIONAL BUILDING CODE (IBC)
2012 INTERNATIONAL MECHANICAL CODE (IMC)
2012 INTERNATIONAL FUEL GAS CODE
2012 INTERNATIONAL ELECTRICAL CODE
2013 LOUISIANA STATE PLUMBING CODE (LSPC)
NFPA 10 - FIRE EXTINGUISHERS
NFPA 13 - AUTOMATIC SPRINKLER SYSTEMS
NFPA 72 - FIRE ALARM SYSTEMS
2010 ADA ACCESSIBILITY GUIDELINES
1998 FAIR HOUSING GUIDELINES

GENERAL NOTES

THIS PLAN IS PROVIDED FOR THE CONVENIENCE OF THE BUILDING OFFICIAL AND
FIRE MARSHAL. IT DOCUMENTS THE MAJOR LIFE SAFETY FEATURES OF THE
PROJECT INCLUDING THE EXIT FLOW AND FIRE SEPARATION. THIS PLAN IS TO BE
FOLLOWED IN REGARDS TO LIFE SAFETY ISSUES BY THE GENERAL CONTRACTOR.
SEE MECHANICAL DRAWINGS FOR LOCATIONS OF FIRE DAMPER REQUIREMENTS
IN DUCTWORK. IN GENERAL ALL DUCTWORK THRU RATED WALL WILL REQUIRE A
DAMPER.

SEE ELECTRICAL DRAWINGS FOR LOCATION OF FIRE ALARM SYSTEM
SEE REFLECTED CEILING PLANS AND ELECTRICAL DRAWINGS FOR EXIT LIGHT
LOCATIONS
SEE PLUMBING DRAWINGS FOR STANDPIPE SYSTEMS

EGRESS LEGEND

13 OCCUPANT LOAD (1 HR) DOOR RATING
17 OCCUPANT ROUTE (U406) UNDERWRITERS
12 EXIT WIDTH REQUIRED EXIT WIDTH PROVIDED FEC FIRE EXTINGUISHER
24 STAIR WIDTH REQUIRED STAIR WIDTH PROVIDED FE FIRE EXTINGUISHER
CABINET

----- ONE HOUR RATED WALL ASSEMBLY
----- TWO HOUR RATED WALL ASSEMBLY
----- THREE HOUR RATED WALL ASSEMBLY
----- FOUR HOUR RATED WALL ASSEMBLY

AREAS OF REFUGE

AREAS OF REFUGE ARE NOT REQUIRED AT STAIRWAYS IN
BUILDINGS EQUIPPED THROUGHOUT BY AN AUTOMATIC SPRINKLER SYSTEM
(IBC 1007.3 EXCEPTION 2)

IN BUILDINGS PROTECTED THROUGHOUT BY AN APPROVED, SUPERVISED AUTOMATIC
SPRINKLER SYSTEM, THE TWO ACCESSIBLE ROOMS OR SPACES SEPARATED FROM
EACH OTHER BY SMOKE RESISTIVE PARTITIONS IN ACCORDANCE WITH THE
DEFINITION OF AREA OF REFUGE IN 3.3.20 SHALL NOT BE REQUIRED
(NFPA 30.2.2.12.2)

HB HARRY
BAKER
SMITH
SA II
ARCHITECTS II
P L L C
189 Maple Ridge Drive Metairie, LA 70001
central@hbsaii.com 504.885-4477
hbsaii.com
SINCE 1961

BROADMOOR
DESIGN-BUILD CONTRACTOR

BROADMOOR, LLC
2740 NORTH ARNOLD ROAD, METAIRIE, LA 70002
T 504.885.5400 F 504.885.6065
broadmoorllc.com

WAX MUSEUM CONDOS

917 CONTI STREET
NEW ORLEANS, LA.

THESE PLANS AND SPECIFICATIONS HAVE
BEEN PREPARED BY ME OR UNDER MY
CLOSE PERSONAL SUPERVISION AND
TO THE BEST OF MY KNOWLEDGE AND
BELIEF THEY COMPLY WITH ALL CITY,
STATE AND FEDERAL REQUIREMENTS,
AND I AM NOT PROVIDING CONTRACT
ADMINISTRATION

CERTIFIED CORRECT



THIS DRAWING IS CONFIDENTIAL AND
NOT BE LOANED, REPRODUCED, COPIED,
EITHER WHOLLY OR IN PART, OR MADE
PUBLIC IN ANY MANNER WITHOUT THE
WRITTEN CONSENT OF HBSA II ARCHITECTS.
A PROFESSIONAL L.L.C. ALL RIGHTS OF
DESIGN OR INVENTION ARE RESERVED AND
WILL REMAIN THE SOLE PROPERTY OF
HBSA I ARCHITECTS A PROFESSIONAL L.L.C.

REVISION HISTORY				
NO.	DATE	DESCRIPTION	BY	CHKD.
1	06/20/16	SCHEMATIC DESIGN		
2	07/14/16	DESIGN DEVELOPMENT		
3	08/19/16	FOUNDATION PERMIT		
4	09/30/16	VCC PERMIT REVIEW		

LIFE SAFETY

PROJECT#: 1435
PHASE: PERMIT
DRAFTER:
CHECKER:
SCALE: AS NOTED
ISSUED: 09/30/2016
SHEET#:

A002